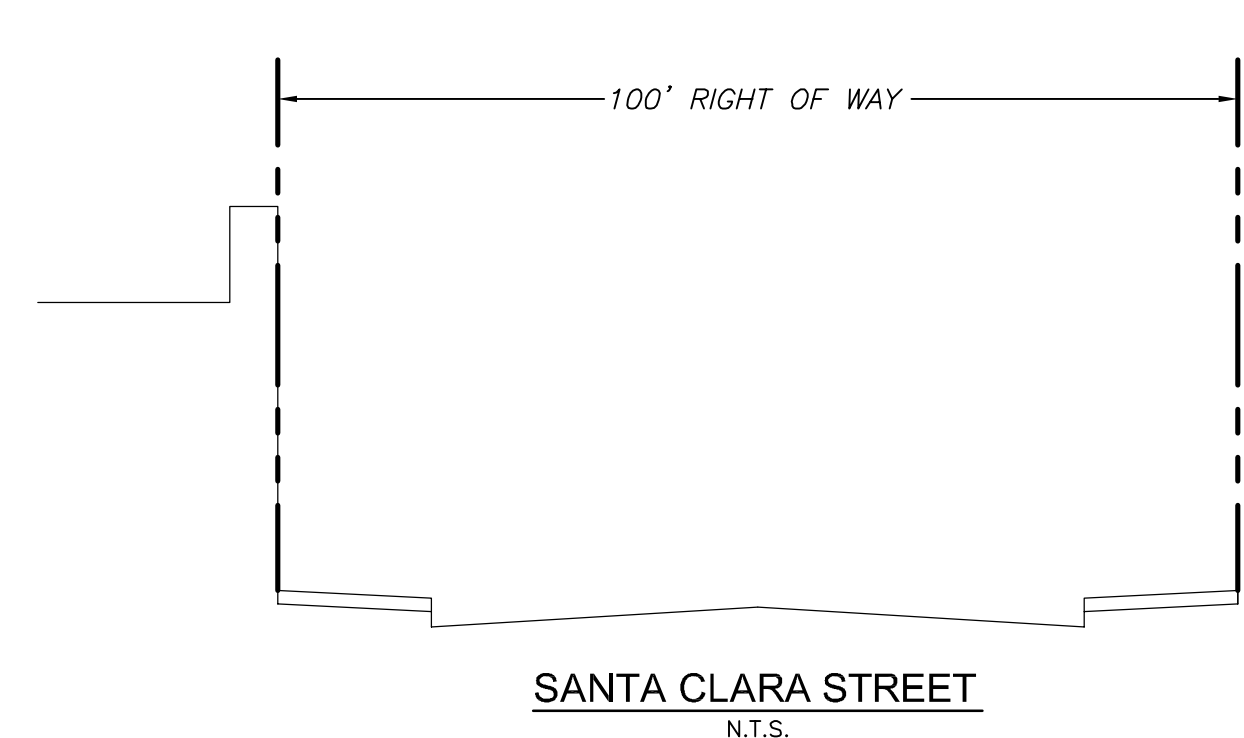
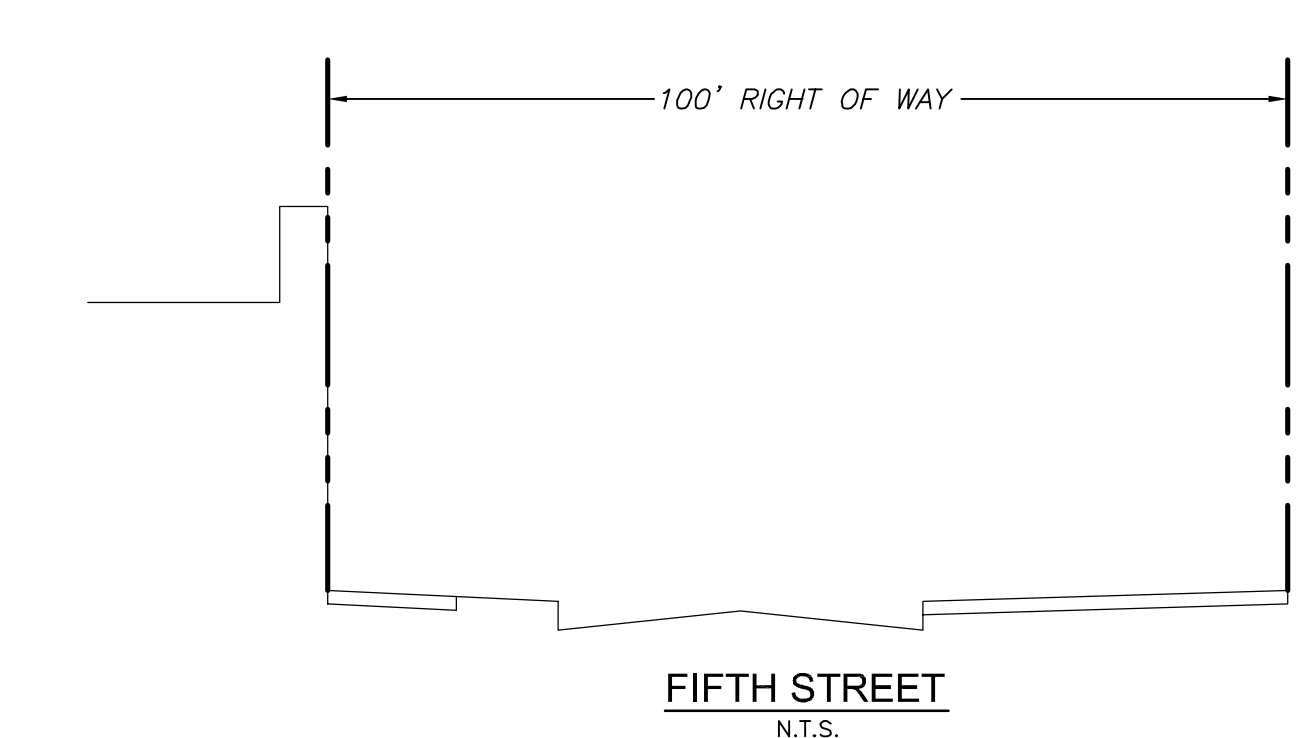
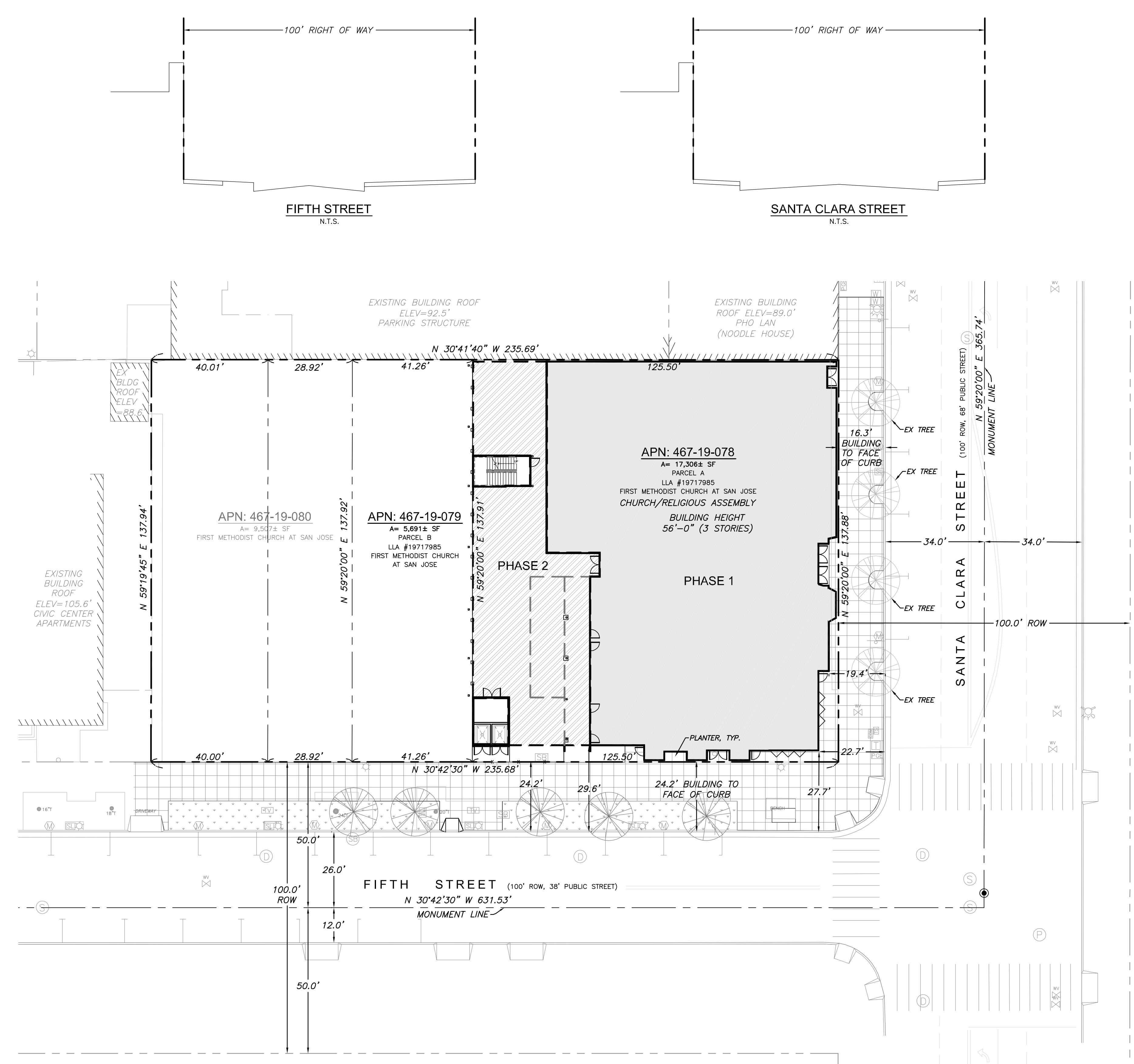


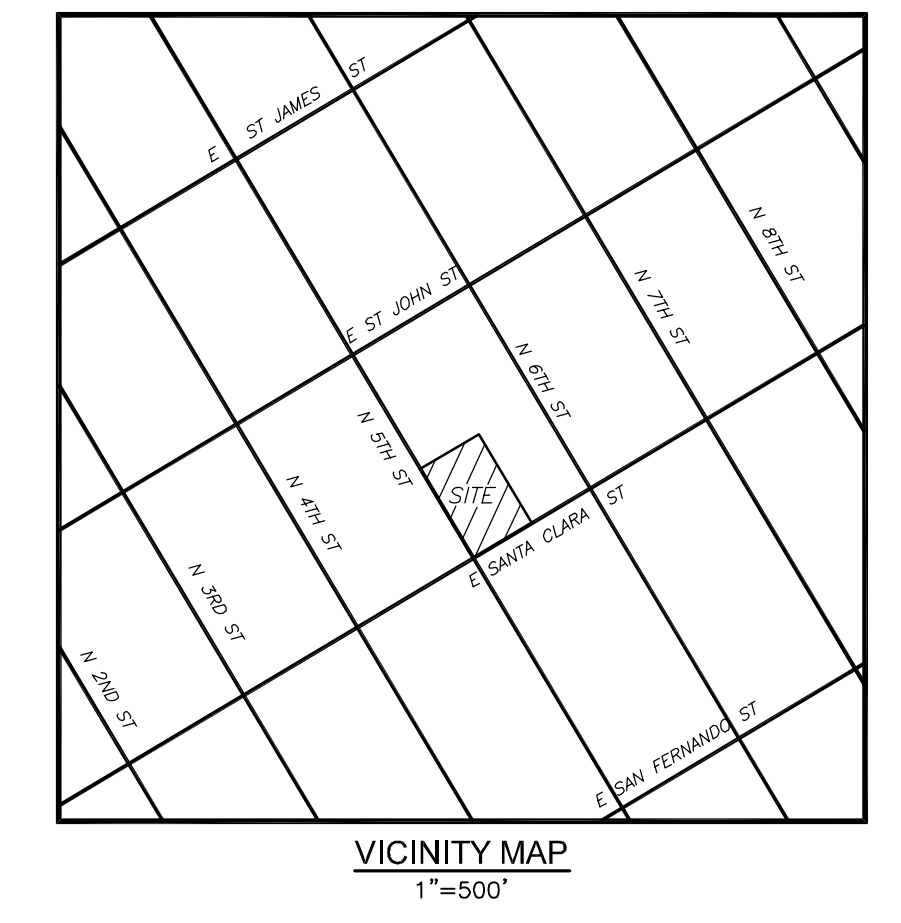
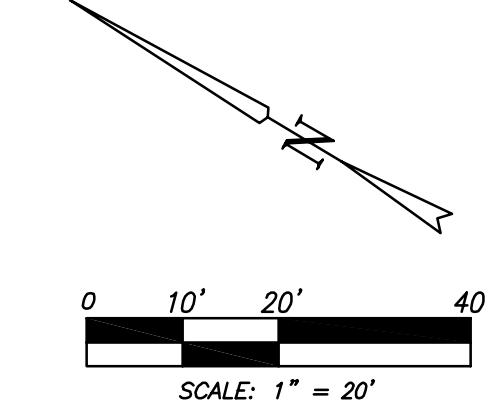
DWP NAME: I:\1028-San Jose-United Methodist Church\Drawings\1028-SJC-Site Plan.dwg, LAST EDITED: Fri, Jun 21, 2011, 10:28am  
 User: jayman, AutoCAD LT 12.02, (DWS) Tech, Microsoft Windows NT Worksta...



### LEGEND

	PROPERTY LINE - SUBJECT PARCEL
	PROPERTY LINE - INTERIOR LOT LINES
	PROPERTY LINE - ADJACENT PARCELS
	MONUMENT LINE / CENTERLINE, AS NOTED
	BEARING AND DISTANCE
	ASSESSOR'S PARCEL NUMBER
	EXISTING
	FOUND MONUMENT, 2-1/2" BRASS DISC
	STORM DRAIN
	SANITARY SEWER
	WATER MAIN
	STORM DRAIN MANHOLE
	AREA DRAIN
	CATCH BASIN
	SANITARY SEWER MANHOLE
	SEWER CLEANOUT
	WATER METER
	WATER VALVE
	IRRIGATION CONTROL VALVE
	FIRE HYDRANT
	FIRE WATER
	GAS METER
	GAS VALVE
	PG&E VAULT/MANHOLE
	LIGHTING
	ELECTRIC BOX
	TRAFFIC SIGNAL
	TRAFFIC SIGNAL BOX
	STREET LIGHTING BOX
	PAC BELL VAULT
	PHONE
	SBC BOX/MANHOLE
	COMMUNICATIONS BOX
	CABLE T.V. BOX
	SERVICE BOX
	UTILITY POLE
	UTILITY POLE GUY WIRE
	UTILITY VAULT OR MISCELLANEOUS VALVE
	HANDICAP PARKING
	PARKING METER
	SIGN
	BOLLARD
	VIDEO DROP BOX

**BASIS OF BEARINGS**  
 THE BEARING NORTH 59°20'00" EAST OF THE CENTERLINE OF EAST SANTA CLARA STREET FOUND BETWEEN TWO MONUMENTS, AS SHOWN ON THAT MAP TRACT NO. 8085 RECORDED IN BOOK 598 OF MAPS AT PAGES 21 & 22, SANTA CLARA COUNTY RECORDS, WAS TAKEN AS THE BASIS OF BEARINGS OF THIS SURVEY.



**WATER POLLUTION CONTROL PLANT NOTE**  
 PURSUANT TO PART 2.75 OF CHAPTER 15.12 OF THE SAN JOSE MUNICIPAL CODE, NO VESTED RIGHT TO A BUILDING PERMIT SHALL ACCRUE AS THE RESULT OF THE GRANTING OF ANY LAND DEVELOPMENT APPROVALS AND APPLICATIONS WHEN AND IF THE CITY MANAGER MAKES A DETERMINATION THAT THE CUMULATIVE SEWAGE TREATMENT DEMAND ON THE SAN JOSE-SANTA CLARA WATER POLLUTION CONTROL PLANT REPRESENTED BY APPROVED LAND USES IN THE AREA SERVED BY SAID PLANT WILL CAUSE THE TOTAL SEWAGE TREATMENT DEMAND TO MEET OR EXCEED THE CAPACITY OF THE SAN JOSE-SANTA CLARA WATER POLLUTION CONTROL TO TREAT SUCH SEWAGE ADEQUATELY AND WITHIN THE DISCHARGE STANDARDS IMPOSED ON THE CITY BY THE STATE OF CALIFORNIA REGIONAL WATER QUALITY CONTROL BOARD FOR THE SAN FRANCISCO BAY REGION. SUBSTANTIVE CONDITIONS DESIGNED TO DECREASE SANITARY SEWAGE ASSOCIATED WITH ANY LAND USE APPROVAL MAY BE IMPOSED BY THE APPROVING AUTHORITY.

VISIONEERING STUDIOS  
envision.design.build

www.VisioneeringStudios.com  
 5 Pellet's Court  
 Irvine, CA 92606

SAN JOSE, CA

**JMH WEISS, INC.**  
 Civil Engineering - Surveying - Land Planning  
 150 Arden Blvd., Suite 700  
 San Jose, CA 95113 (408) 286-4555  
 www.jmhweiss.com

GENERAL DEVELOPMENT PLAN  
EXHIBIT "C"

FIRST UNITED METHODIST CHURCH

WORSHIP CENTER

SITE PLAN

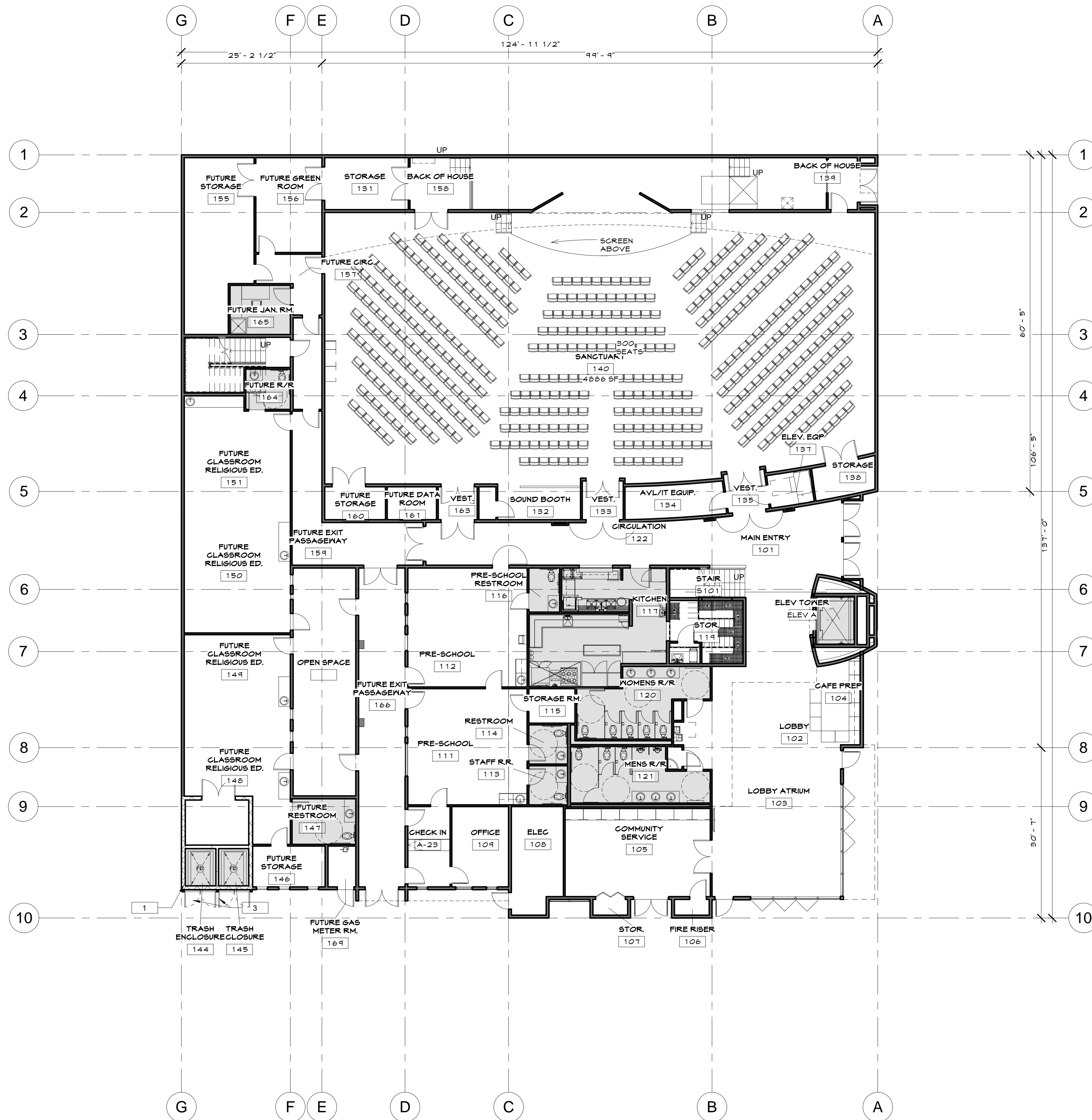
DATE  
**01.21.2011**

PROJECT CODE  
**228-I**

Sheet No.

**2**

2/22/2011 10:02:17 AM C:\Users\jimoto\Documents\Revit User Files\San Jose - Site development\_CENTRAL\_jimoto.rvt



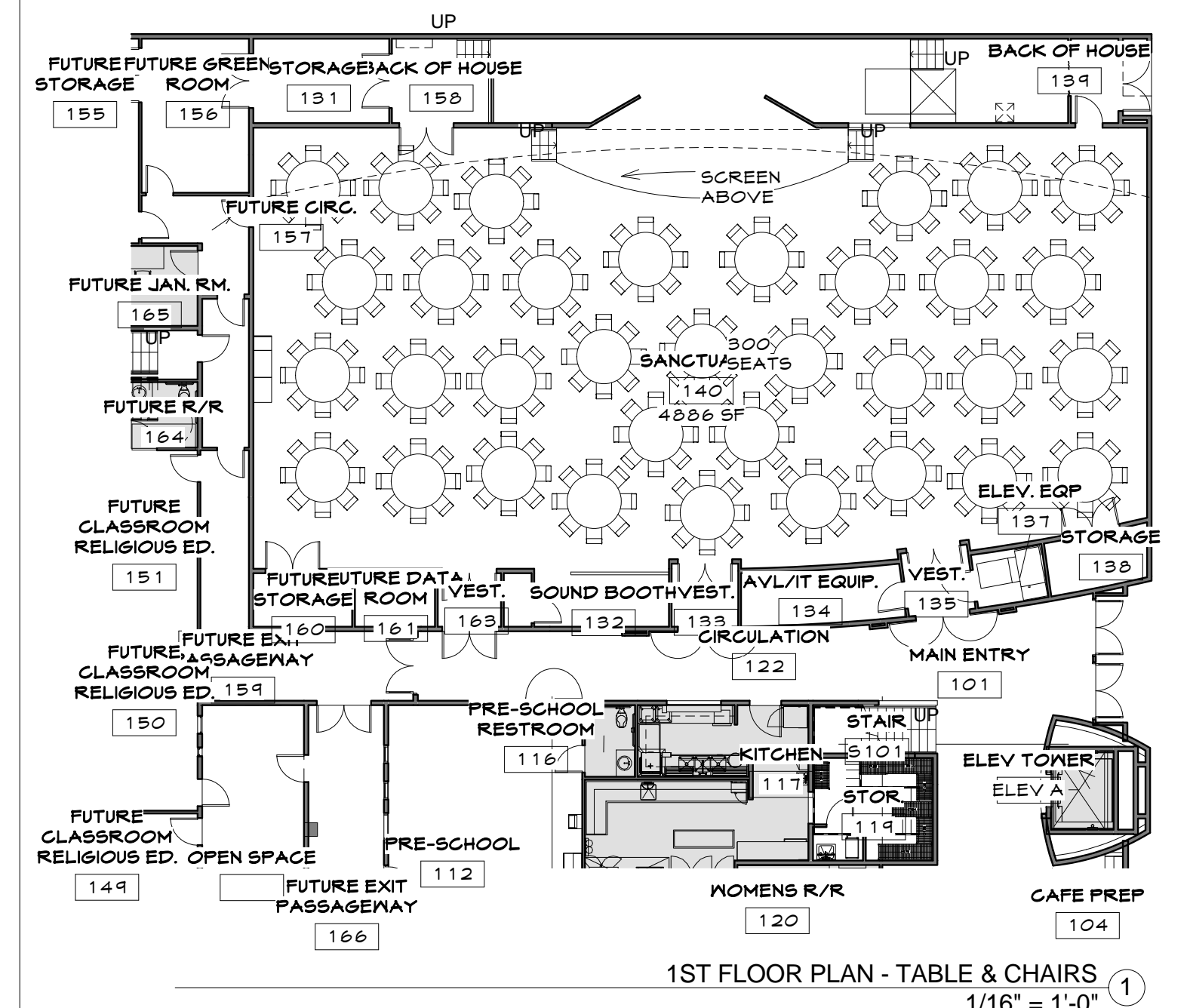
**LEGEND**

**SEATING SCHEDULE\_FULL BUILDOUT**

Room Number	Comments	Count
A-37 WORSHIP	STACKED SEATING (21" CHAIRS SET UP WITH A 36" BACK TO BACK)	496
A-37 WORSHIP	TABLES AND CHAIRS (34 6" DIAMETER TABLES /8 CHAIRS PER TABLE)	272

- 1 FULLY COVERED TRASH & RECYCLING ENCLOSURE. THE ROOF AND FLOOR DRAINS SHALL PLUMB TO THE SANITARY SYSTEM.
- 2 TEMPORARY PHASE ONE WOOD FENCE 6'-0" HIGH REFER TO DETAIL PROVIDED
- 3 TRASH/RECYCLING ENCLOSURE GATES
- 4 W.I. GATES

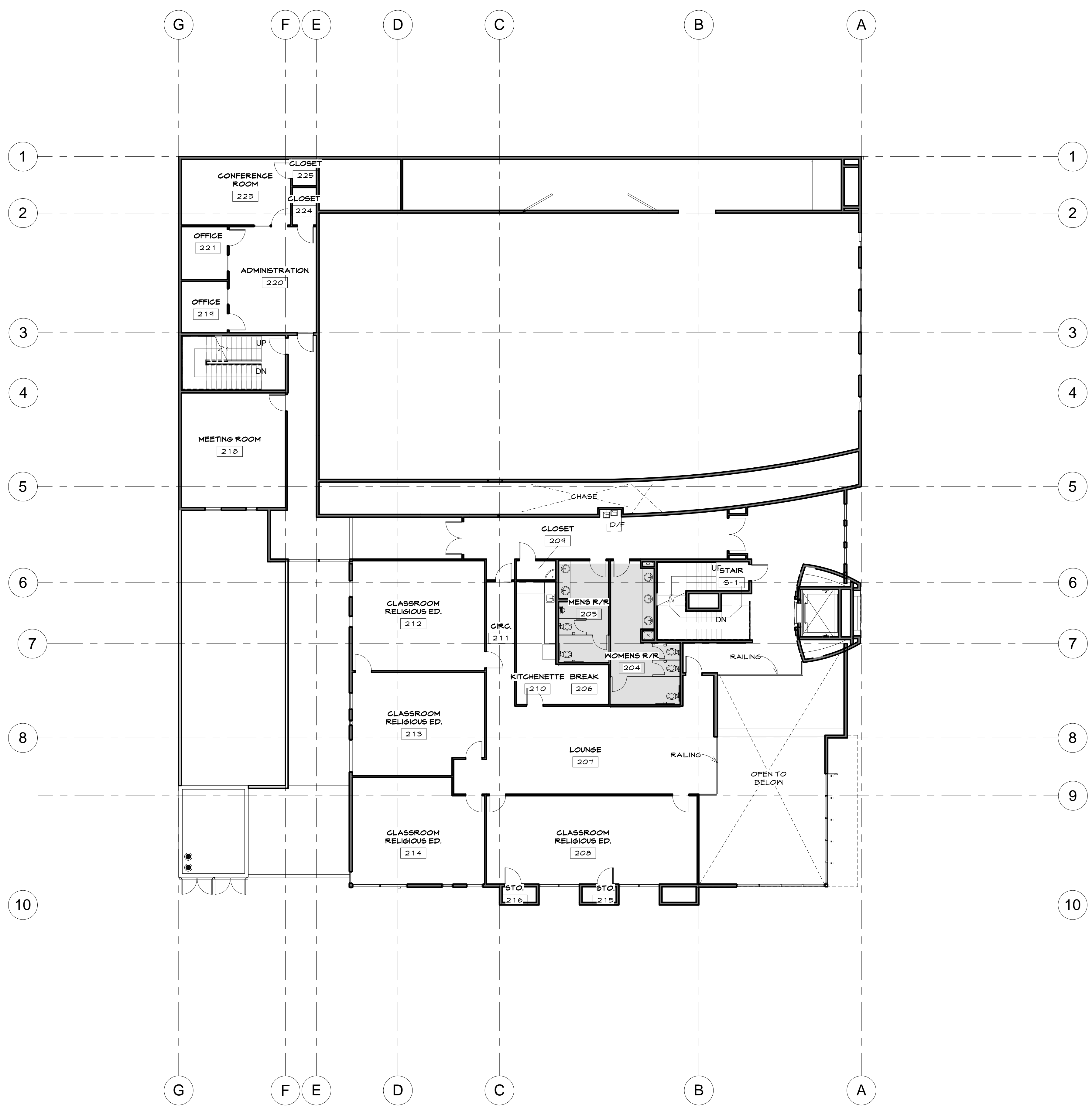
----- INDICATES ONE HOUR CORRIDOR CONSTRUCTION



**BUILDING SQUARE FOOTAGE - FULL BUILDOUT**

FIRST FLOOR SQ. FT. =	17,759 S.F.
SECOND FLOOR SQ. FT. =	6,599 S.F.
THIRD FLOOR SQ. FT. =	5,165 S.F.
OUTDOOR DECK SQ.FT.=	1,693 S.F.
<b>BUILDING TOTAL SQ. FT. =</b>	<b>27,523 S.F.</b>
<b>BUILDING AND DECK TOTAL S.F.=</b>	<b>29,216 S.F.</b>

C:\Users\jimoto\Documents\Revit User Files\San Jose - Site development\_CENTRAL\_jimoto.rvt



2ND FLOOR FULL BUILDOUT  
3/32" = 1'-0" 1

LEGEND

BUILDING SQUARE FOOTAGE - FULL BUILDOUT

FIRST FLOOR SQ. FT. =	17,759 S.F.
SECOND FLOOR SQ. FT. =	6,599 S.F.
THIRD FLOOR SQ. FT. =	5,165 S.F.
OUTDOOR DECK SQ.FT.=	1,693 S.F.
<b>BUILDING TOTAL SQ. FT. =</b>	<b>27,523 S.F.</b>
<b>BUILDING AND DECK TOTAL S.F.=</b>	<b>29,216 S.F.</b>

SAN JOSE, CA

FIRST UNITED METHODIST CHURCH

WORSHIP CENTER

BUILDING ELEVATIONS / FLOOR PLANS

H 10-018

FULL BUILDOUT

SITE DEVELOPMENT

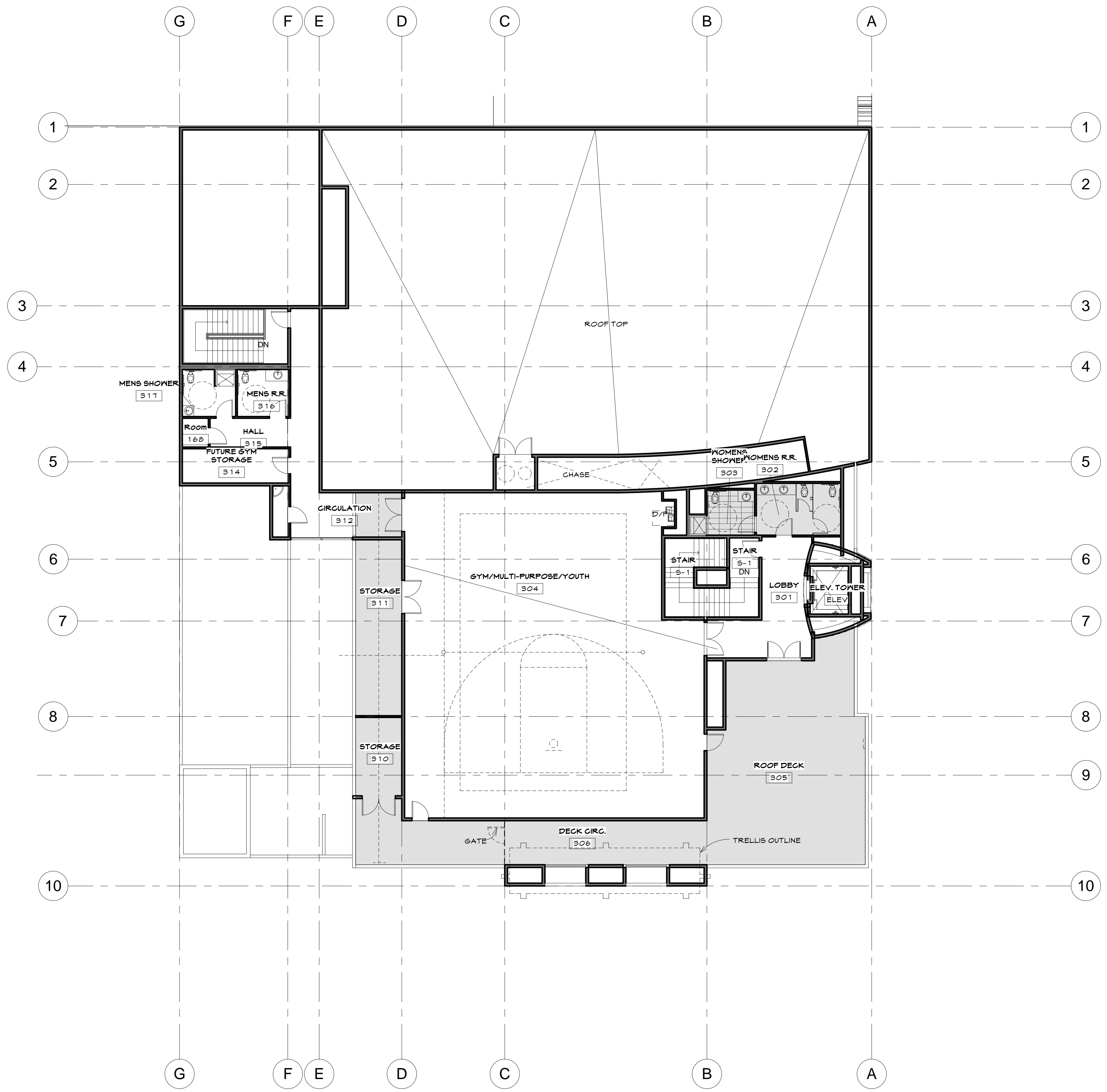
DATE  
02.02.2011

PROJECT CODE  
228-02

Sheet No.

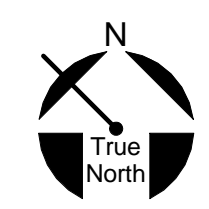
52

C:\Users\jmatto\Documents\Revit User Files\San Jose - Site development\_CENTRAL\_jmatto.rvt



3RD FLOOR FULL BUILDOUT  
3/32" = 1'-0"

LEGEND



BUILDING SQUARE FOOTAGE - FULL BUILDOUT

FIRST FLOOR SQ. FT. =	17,759 S.F.
SECOND FLOOR SQ. FT. =	6,599 S.F.
THIRD FLOOR SQ. FT. =	5,165 S.F.
OUTDOOR DECK SQ.FT.=	1,693 S.F.
<b>BUILDING TOTAL SQ. FT. =</b>	<b>27,523 S.F.</b>
<b>BUILDING AND DECK TOTAL S.F.=</b>	<b>29,216 S.F.</b>

www.VisioneeringStudios.com  
5 Peters Canyon Road  
Folsom, CA 95686

SAN JOSE, CA

FIRST UNITED METHODIST CHURCH

FULL BUILDOUT

SITE DEVELOPMENT

DATE  
02.02.2011

PROJECT  
CODE  
228-02

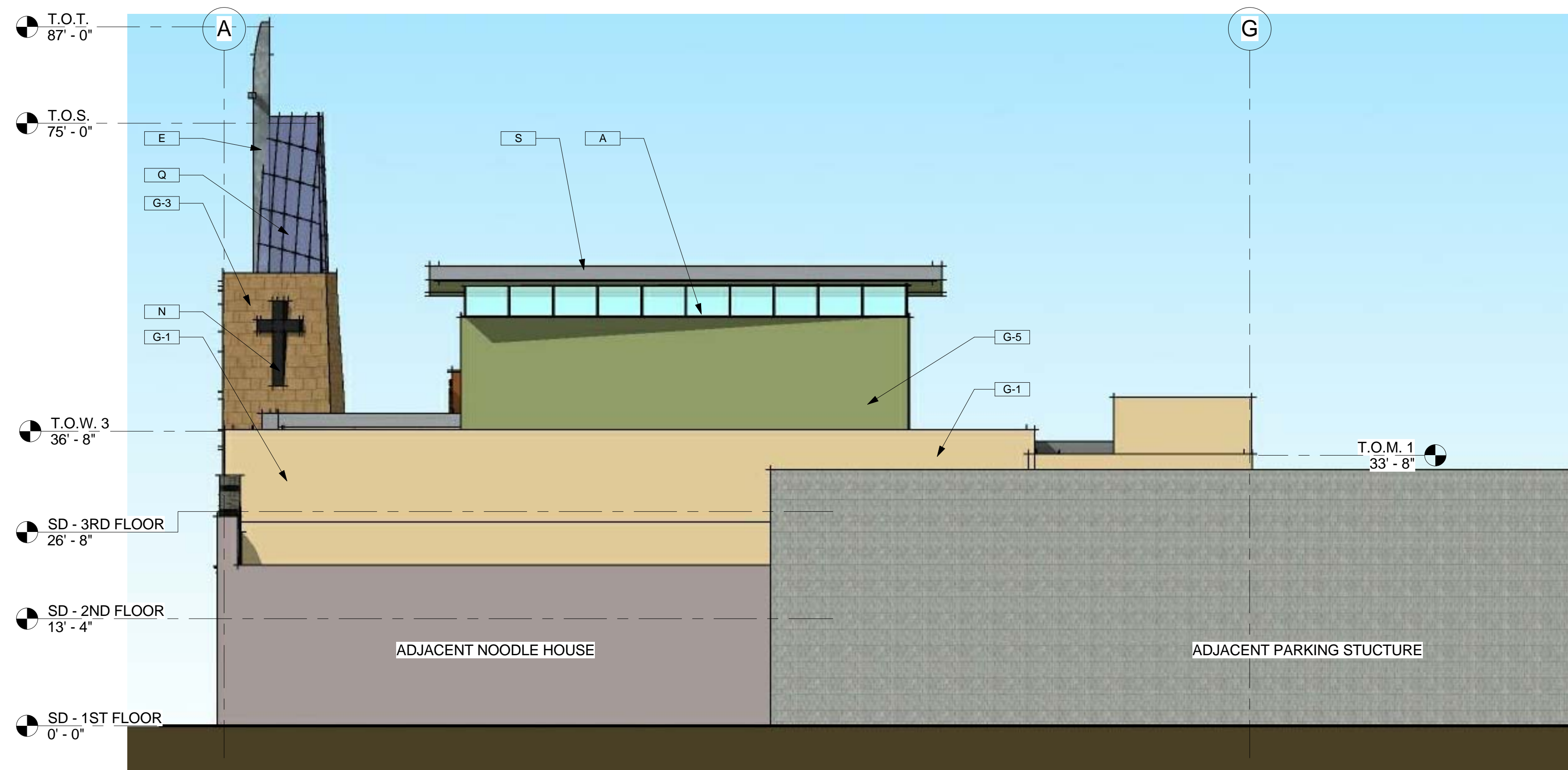
WORSHIP CENTER

BUILDING ELEVATIONS / FLOOR  
PLANS

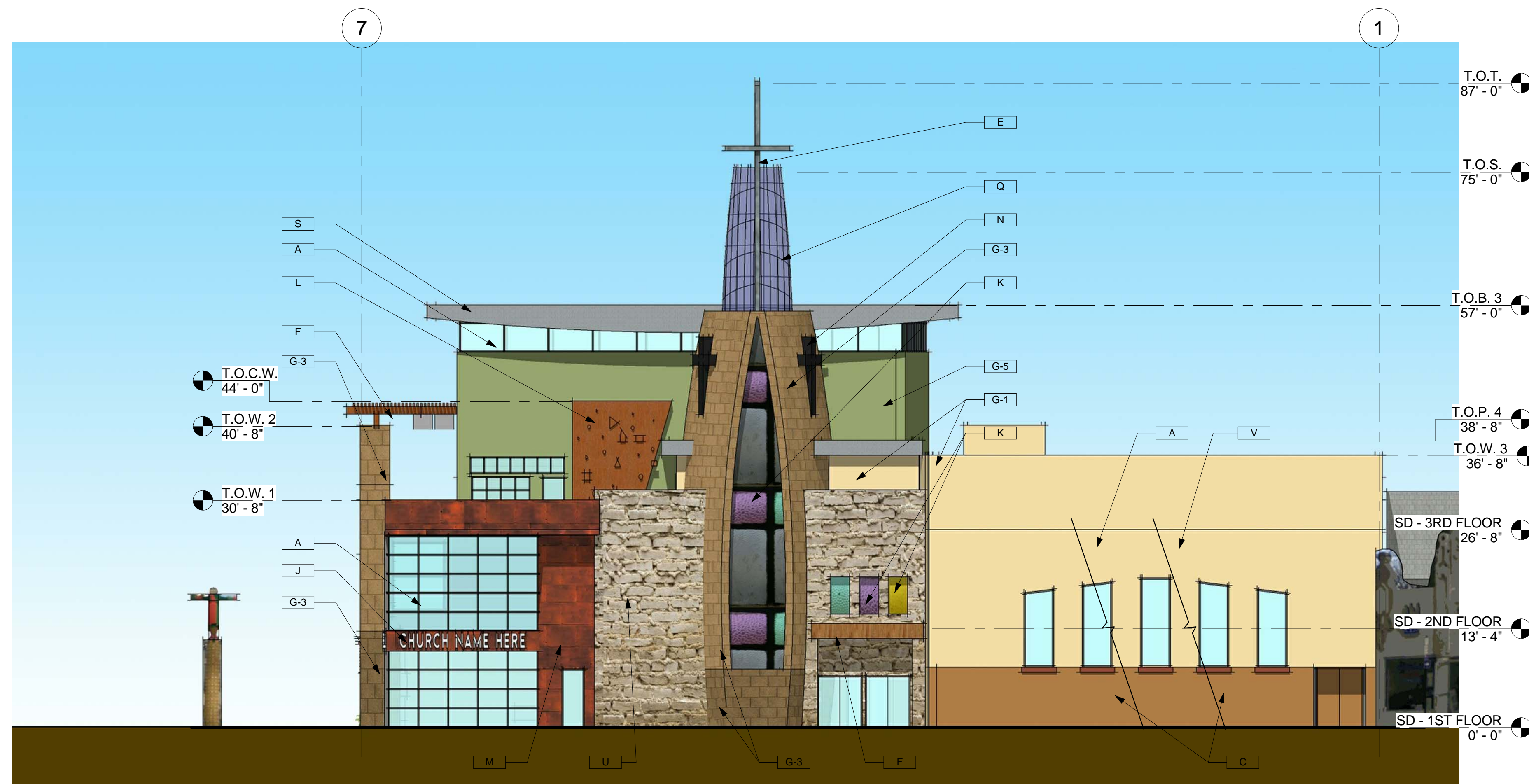
H 10-018

Sheet No.

56



VINTAGE TOWER SIDE ELEVATION ②  
3/32" = 1'-0"



SANTA CLARA STREET SIDE ELEVATION ①  
3/32" = 1'-0"

LEGEND

EXTERIOR MATERIALS LEGEND

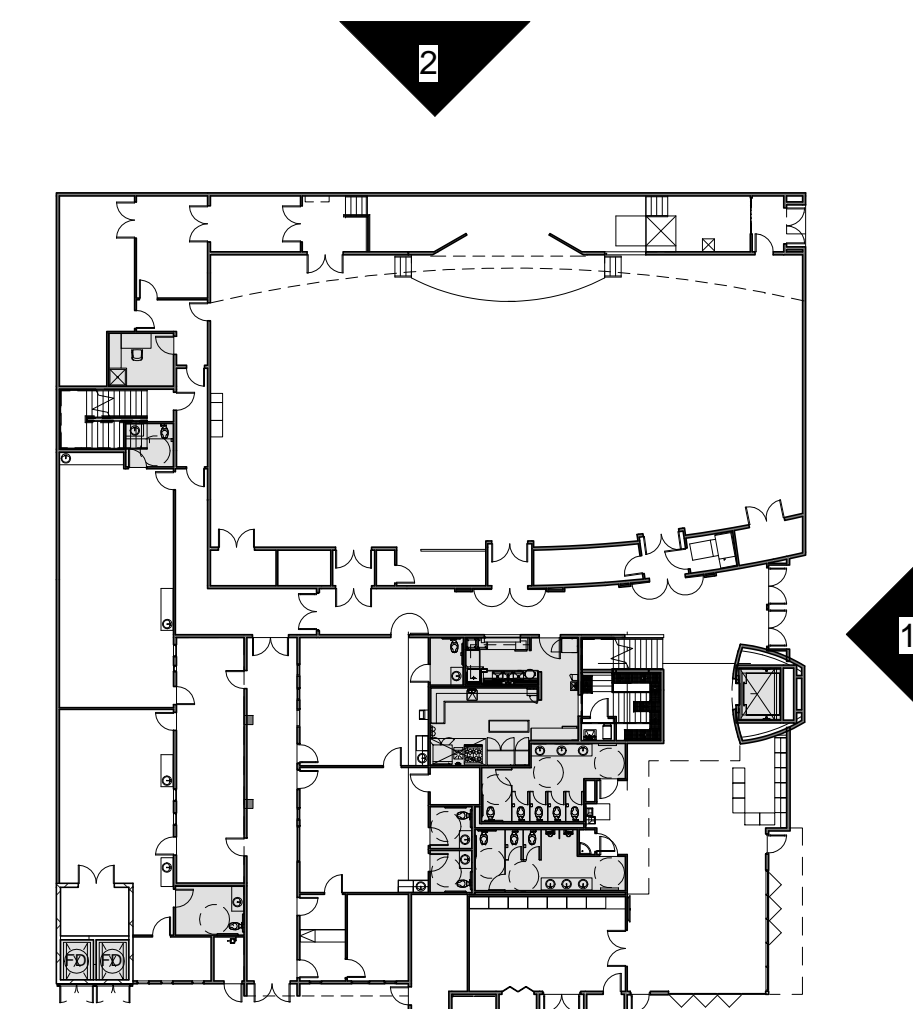
- A. ALUMINUM STOREFRONT TINTED DUAL GLAZING SYSTEM
- B. TYPICAL ALUMINUM FRAMED WINDOWS
- C. CEMENT FIBER BOARD SLATS, TO BE PAINTED - REFER TO PROPOSED EXTERIOR MATERIALS LEGEND FOR COLOR INFORMATION
- E. STEEL STRUCTURAL ELEMENTS - REFER TO PROPOSED EXTERIOR MATERIALS LEGEND FOR COLOR INFORMATION
- F. WOOD STRUCTURAL ELEMENTS - REFER TO PROPOSED EXTERIOR MATERIALS LEGEND FOR COLOR INFORMATION
- G. STUCCO FINISH, STAMPED OR TEXTURED, MULTIPLE COLORS; REFER TO PROPOSED EXTERIOR MATERIALS LEGEND FOR COLOR INFORMATION
- J. PROPOSED CHURCH NAME LOCATION - TO BE UNDER SEPERATE SIGN PERMIT. SHOWN FOR INFO ONLY
- K. STAINED GLASS
- L. CLIMBING WALL (PRE-MANUFACTURED); COLOR TO BE SELECTED
- M. CORTEN PORCELAIN TILE (APPROX. 18" X 24"); REFER TO PROPOSED EXTERIOR MATERIALS LEGEND FOR COLOR INFORMATION
- N. COLORED VINYL GLASS DECALS
- O. WOOD FENCE - SEE DET.
- P. SINGLE PLY ROOFING MEMBRANE
- Q. TRANSLUCENT PRE-MANUFACTURED FIBERGLASS STRUCTURE
- R. THEMED ENTRY STRUCTURE BY OTHERS
- S. ROOF FASCIA
- T. PARKING STRUCTURE
- U. JERUSALEM STONE VENEER FROM 8" UP TO TOP OF WALL (APPROX. 8" X (8"-24"))
- V. CEMENT FIBER SLATS OVER STOREFRONT SYSTEM
- W. SPANDREL GLASS

EXTERIOR MATERIALS LEGEND

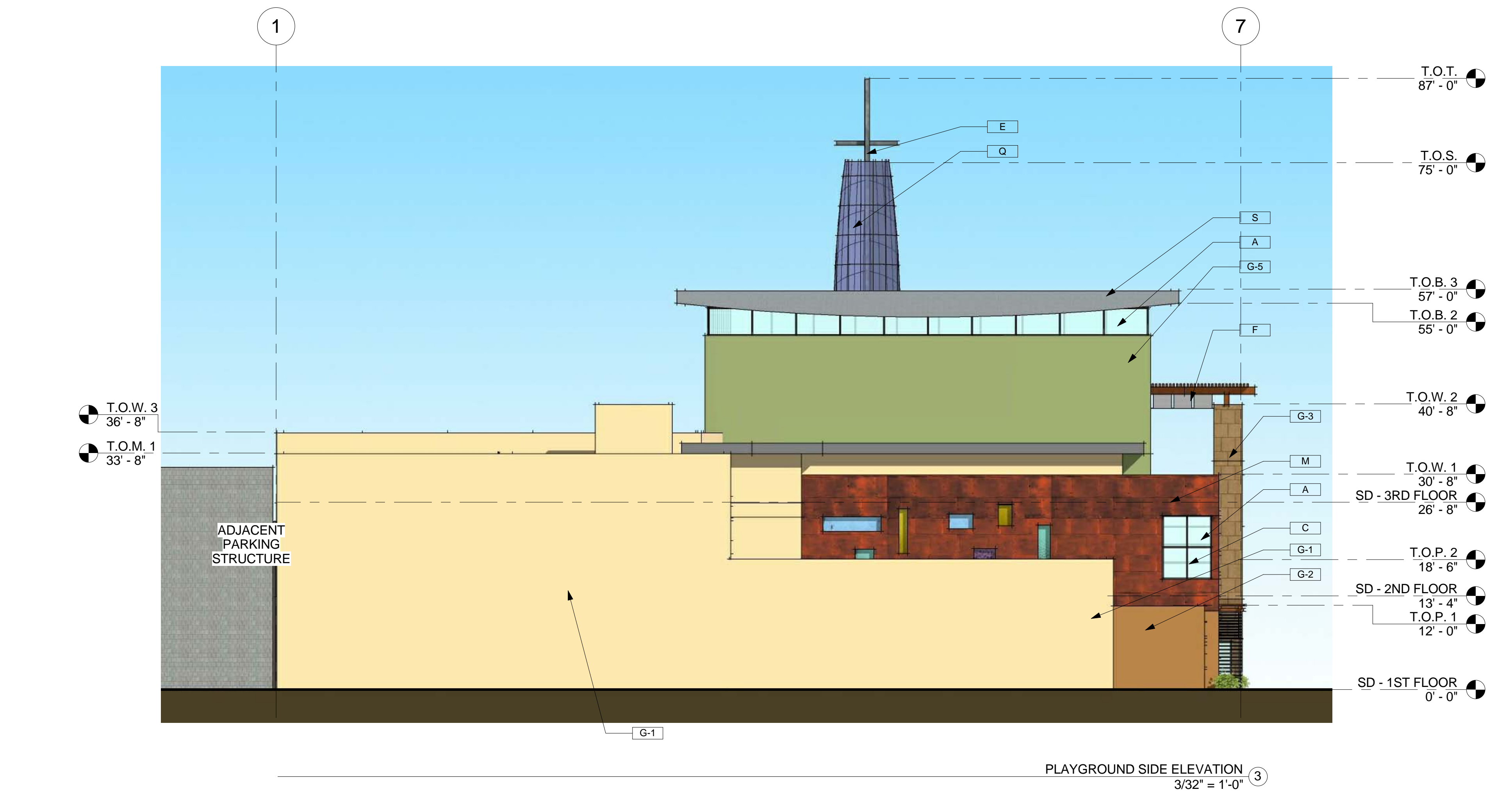
- E ALUMINUM FINISH
- F WOOD FINISH
- G-1 DE6185 LIGHT ASPIRATION - OR E.I.F.S. "SMOOTH TEXTURED"
- G-2 DE6112 CEDAR CHEST - TEXTURED STUCCO
- G-3 TILE STAMPED STUCCO
- G-4 ROCK PATTERN STAMPED STUCCO
- G-5 DE6236 WILDERNESS OR E.I.F.S. "SMOOTH TEXTURED"
- M CORTEN PORCELAIN TILE
- O DEA161 WILD MUSTANG
- C CEMENT FIBER BOARD SLATS

NOTE:

- E.I.F.S. IS PROPOSED IN AREAS ABOVE 8' FROM THE FINISHED FLOOR
- PORTLAND CEMENT PLASTER "SMOOTH TROWELED FINISH" IS PROPOSED IN AREAS FROM 0' UP TO 8' FROM THE FINISHED FLOOR
- TRUE STONE VENEER IS PROPOSED IN AREAS FROM 0' UP TO 8' FROM THE FINISHED FLOOR



KEY PLAN ①  
1/32" = 1'-0"



### LEGEND

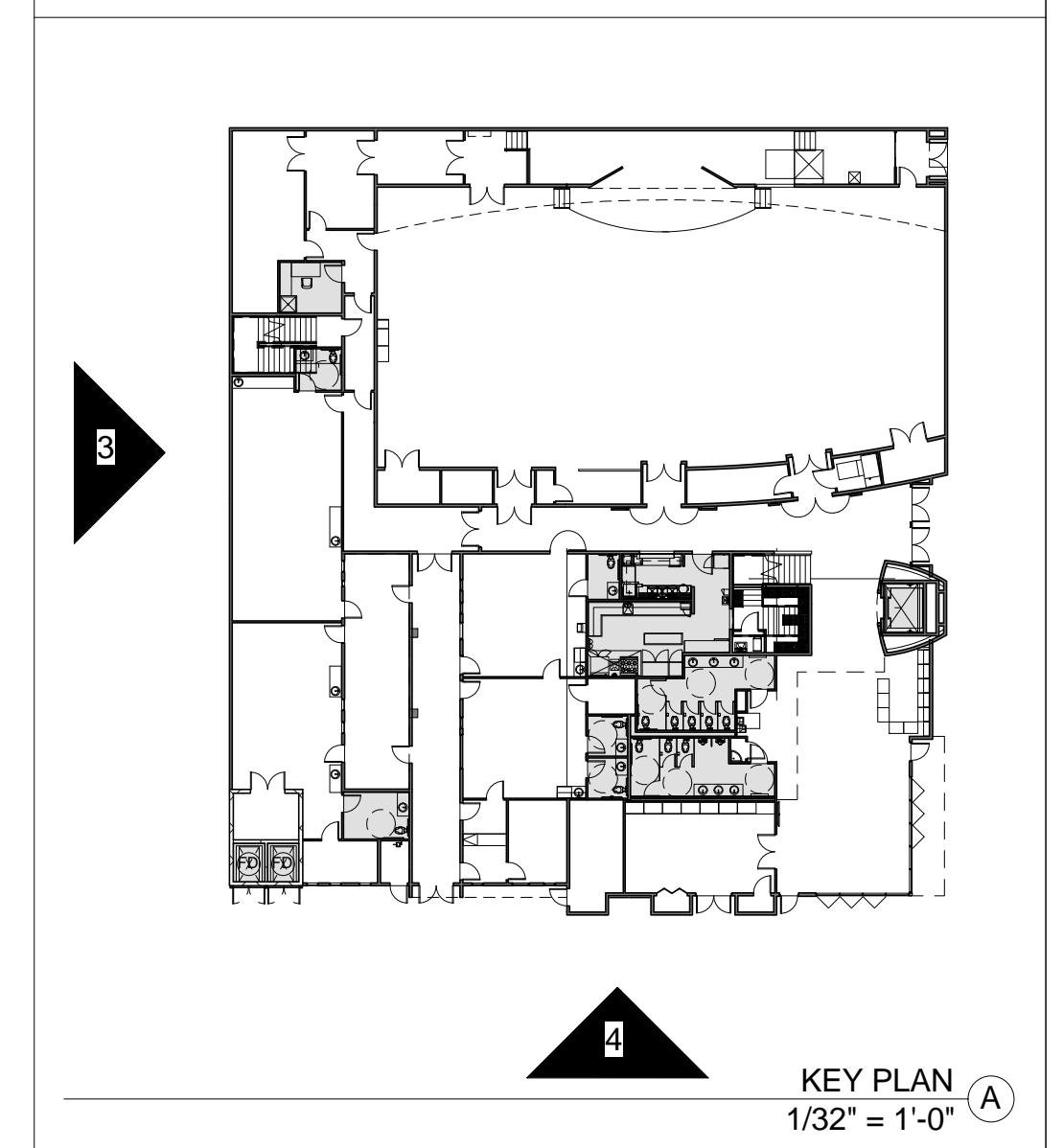
#### EXTERIOR MATERIALS LEGEND

- A. ALUMINUM STOREFRONT TINTED DUAL GLAZING SYSTEM
- B. TYPICAL ALUMINUM FRAMED WINDOWS
- C. CEMENT FIBER BOARD SLATS, TO BE PAINTED - REFER TO PROPOSED EXTERIOR MATERIALS LEGEND FOR COLOR INFORMATION
- E. STEEL STRUCTURAL ELEMENTS - REFER TO PROPOSED EXTERIOR MATERIALS LEGEND FOR COLOR INFORMATION
- F. WOOD STRUCTURAL ELEMENTS - REFER TO PROPOSED EXTERIOR MATERIALS LEGEND FOR COLOR INFORMATION
- G. STUCCO FINISH, STAMPED OR TEXTURED, MULTIPLE COLORS; REFER TO PROPOSED EXTERIOR MATERIALS LEGEND FOR COLOR INFORMATION
- J. PROPOSED CHURCH NAME LOCATION - TO BE UNDER SEPERATE SIGN PERMIT. SHOWN FOR INFO ONLY
- K. STAINED GLASS
- L. CLIMBING WALL (PRE-MANUFACTURED); COLOR TO BE SELECTED
- M. CORTEN PORCELAIN TILE (APPROX. 18" X 24"); REFER TO PROPOSED EXTERIOR MATERIALS LEGEND FOR COLOR INFORMATION
- N. COLORED VINYL GLASS DECALS
- O. WOOD FENCE - SEE DET.
- P. SINGLE PLY ROOFING MEMBRANE
- Q. TRANSLUCENT PRE-MANUFACTURED FIBERGLASS STRUCTURE
- R. THEMED ENTRY STRUCTURE BY OTHERS
- S. ROOF FASCIA
- T. PARKING STRUCTURE
- U. JERUSALEM STONE VENEER FROM 8' UP TO TOP OF WALL (APPROX. 8" X (8"-24"))
- V. CEMENT FIBER SLATS OVER STOREFRONT SYSTEM
- W. SPANDREL GLASS

#### EXTERIOR MATERIALS LEGEND

	E ALUMINUM FINISH		M CORTEN PORCELAIN TILE
	F WOOD FINISH		O DEA161 WILD MUSTANG
	G-1 DE6185 LIGHT ASPIRATION - OR E.I.F.S. "SMOOTH TEXTURED"		C CEMENT FIBER BOARD SLATS
	G-2 DE6112 CEDAR CHEST - TEXTURED STUCCO		
	G-3 TILE STAMPED STUCCO		
	G-4 ROCK PATTERN STAMPED STUCCO		
	G-5 DE6236 WILDERNESS OR E.I.F.S. "SMOOTH TEXTURED"		

**NOTE:**  
 - E.I.F.S. IS PROPOSED IN AREAS ABOVE 8' FROM THE FINISHED FLOOR  
 - PORTLAND CEMENT PLASTER "SMOOTH TROWELED FINISH" IS PROPOSED IN AREAS FROM 0' UP TO 8' FROM THE FINISHED FLOOR  
 - TRUE STONE VENEER IS PROPOSED IN AREAS FROM 0' UP TO 8' FROM THE FINISHED FLOOR



SAN JOSE, CA  
**FIRST UNITED METHODIST CHURCH**  
 WORSHIP CENTER  
 BUILDING ELEVATIONS / FLOOR PLANS  
 H 10-018  
 FULL BUILTOUT  
 SITE DEVELOPMENT  
 DATE 02.02.2011  
 PROJECT CODE 228-02  
 SHEET NO. 5d  
 VISIONEERING STUDIOS  
 envision.design.build  
 www.visioneeringstudios.com  
 5 Petters Court  
 San Jose, CA 95128